

VENUE CARDIFF TRAMSHED  
Clare Road Cardiff CF11 6QP  
+44 (0) 2920 235555  
enquiries@tegmjr.com  
www.tramshedcardiff.co.uk



# VENUE GUIDE

FEB 2023

# THE 1865 SOUTHAMPTON

**The 1865**  
Brunswick Square, Southampton , SO14 3AR  
+44 (0) 2382 687 785  
the1865@divergentvenues.com  
www.the1865.com

## CAPACITY

The 1865 can be configured in a variety of ways to suit your event:

Gig or club layout; standing only, with balcony

**Capacity: 750 + Guests**

Gig or Club layout; standing only, without balcony

**Capacity: 450 + Guests**

Theatre layout 1: unreserved seating only

**Capacity: 350 including Guests**

Theatre layout 2: unreserved seating + standing at rear and on balcony

**Capacity: 400 + Guests**

Cabaret layout; tables and chairs + dance floor

**Capacity: 220 + Guests**

Comedy layout; tables and chairs, no dance floor seating

**Capacity: 225 including Guests**

Banqueting layout; tables and chairs

**Capacity: 270 covers**

## HOSPITALITY

Two dressing rooms with separate access

Production office with A4 colour printer

Shower facilities

Kitchen & laundry facilities

Wifi throughout

## PARKING

Secure parking for up to two tour buses with 16 amp single phase power and water available by prior arrangement (see tariff for fees).

Adjoining 25 space pay and display car park & on street parking immediately adjacent.

## LOADING

From 3pm, earlier available on request (see tariff for fees).

Street level loading to front of house, no steps.

2 steps to rear of house



Formerly the Southampton Dockers Social Club, the venue underwent a transformation in 2013 and re-opened it's doors as The 1865, a unique space suitable for a variety of live events from music and comedy to TED Talks through wrestling and boxing and corporate events. In just a decade the venue has become the city's favourite mid-sized space and has played host to a number of renowned, original and diverse artists including Craig David, Becky Hill, Snow Patrol, Deaf Havana, Yungblud, Boston manor, Skinny Lister, Fontaines D.C., New model Army, Electric Six, Fat White Family, Circa Waves, Easy Life, Bombay Bicycle Club, The Fratellis, Lightning Seeds, The Dead Kennedys, Peter Hook, The Levellers, Wargasm, Soul Asylum, Nova Twins, Avatar, Motionless in White, The Answer, Fish, The Undertones, The Dualers and many more.



## CREW & STAFFING

We work closely with local suppliers, we can assist with sourcing crew, event reps, VIP reps, merch sellers etc. please let us know your requirements during advance.

## LICENSE / TIMINGS

Licensed until 12am Monday, Tuesday, Wednesday, Thursday and Sunday.

Licensed until 03.00am Friday and Saturday.

Two fully licensed bars located on floor and mid level.

**Age Restriction: 8+ / Under 14's must be accompanied by 18+**

## MERCHANDISE

All Divergent Venues are proud members of the FAC 100% scheme. We will not and will never charge commission on merchandise sales. [thefac.org/venuedirectory](http://thefac.org/venuedirectory)

## DISABLED ACCESS

Whilst we endeavour to promote full access to our facilities for all of our customers, this is an old building and our efforts are still a work in progress. Our live space is wheelchair friendly and customers with mobility issues will be offered priority viewing positions.

We offer one free carer's pass per ticket holder. Carer ticket holders should be able to meet the needs and medical requirements of the person they are accompanying in the event of an emergency. Guide dogs welcome.

## CONTACTS

### DIARY & EVENT PROGRAMMING:

Sarah Harris | [the1865@divergentvenues.com](mailto:the1865@divergentvenues.com)  
**+44 (0) 1243 963886**

### PRESS & MARKETING

Clarissa Chay | [clarissa@the1865.com](mailto:clarissa@the1865.com)

### VENUE MANAGER

Richard Harper | [richard@the1865.com](mailto:richard@the1865.com)

### PRODUCTION & ADVANCING

[production@divergentvenues.com](mailto:production@divergentvenues.com)

## STAGE

7m x 3.5m (6m x 1m at the front)

## BARRIER

Full MOJO style barrier available

## SOUND

### MIXING

Yamaha M7CL-48, plus extra PSU

(alternative desks available on request - fee applies)

65m Multicoare system

40/16 pair, plus 32Amp

36m AES cable from FOH desk to amp room

*Preferred operating level is 102-104dBc at FOH, 20 second LEQ.*

### AMP ROOM

5 x d&b D12 amplifiers

Front of house (left and right)

FOH – 3 x d & b Q1 per side

3 x d & b Q subs per side

1 x d & b B2 sub per side

1 x d & b Q7 centre fill

1 x d & b Q7 balcony fill

5 x d & b D12 amplifiers

Monitors – 4 x d & b M4 wedges - FOH mixes only

4 channels d & b D6 amplifiers

## STAGE

40 channel patchable stagebox

2 x 8 channel satellite boxes

20 x microphones

20 microphone stands

50 microphone cables

8 x Di boxes

## OPTIONAL (FEES APPLY)

Yamaha M7 Monitor desk (Alternative monitor desks can also be provided) + further d&b amps and wedges



## LIGHTS

### STAGE LIGHTING

6 x Chauvet Intimidator 350 LED moving head spot.

4 x Shehds 19x15 LED Beam Wash moving lights

12 x LEDJ Slimline 7Q5 LED Par

4 x sets Chauvet LED ACL's

2 x Showtec DMX 2 Cell Moles.

### FLOOR

4 x Chauvet Intimidator 350 LED moving head spot.

1 x QTZ Hazer and Fan.

### FACE LIGHTING

6 x Elumen8 MP60 LED Fresnel

4 x LEDJ Slimline 7Q5 LED Par.

### DANCEFLOOR

4 x Chauvet Intimidator 350 LED moving head spot.

4x Shehds 19x15 LED Beam wash moving lights

12 x LEDJ Slimline 7Q5 LED par

### BOXING / WRESTLING RING WASH

4 x Elumen8 MP60 LED Fresnel

4 x Elumen8 MP120 LED Fresnel

### CONTROL

Chamsys Maxi Wing and Xtra Wing.

Dell Touchscreen monitor

Apple Mac Mini running Chamsys MQ software

### DMX LINES TO STAGE

House rig uses 2, 1 x guest line, 1 x Venue house lighting / ambient.

### GUEST LIGHTING POWER

1 x 32 3ph +N+E - Ceeform connector.

### BACKDROPS

1 x 6.5m Pipe on ropes and pulleys.

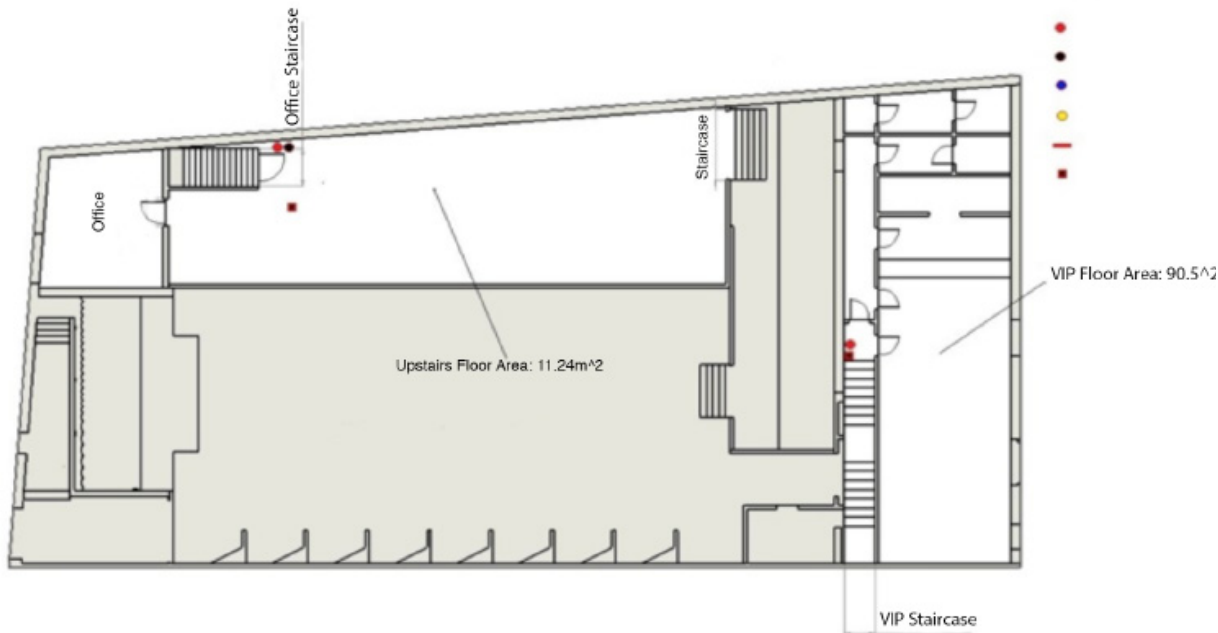
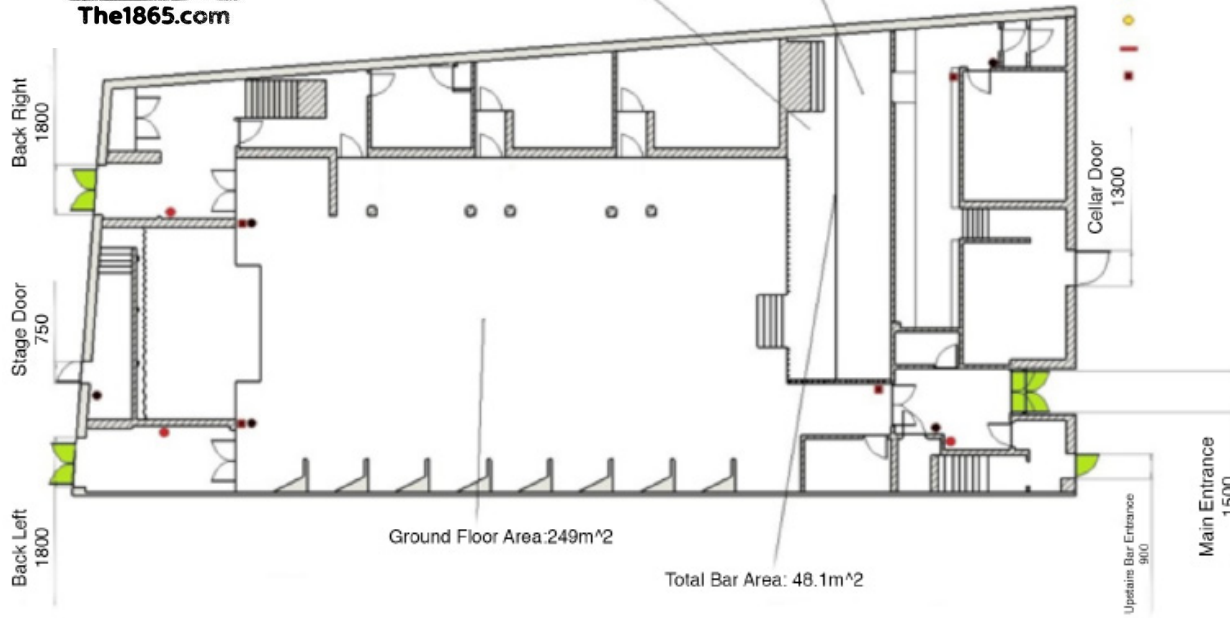
### PROJECTION

1 x Panasonic VZ585N Projector. - HDMI or network input.

1 x 15'6 motorised front projection surface.



Bar Standing Area: 23m<sup>2</sup> Bar Serving Area: 26m<sup>2</sup>



### BUS PARKING

Orange boxes indicate bus position and preferred direction of parking for load-in

If single bus only then use the space directly outside front of venue.

Red arrow indicates 2x 16a power outlets.

Emergency contact for bus issues: +44 (0) 2380 222 605

